

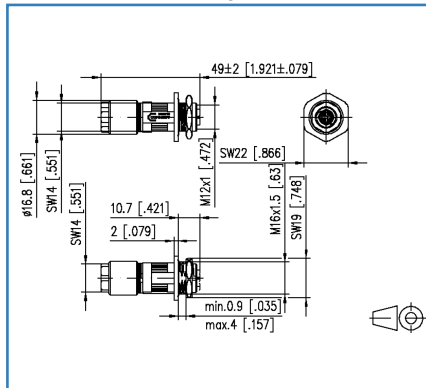
# Data sheet

## M12 Jack X-coded IP67, field assembly with flange

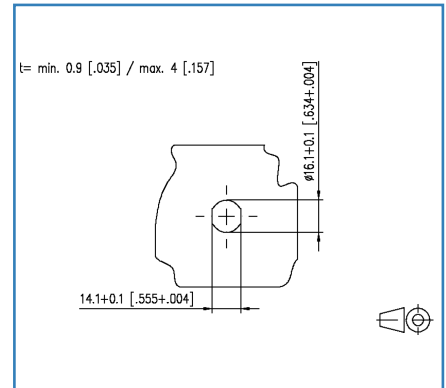
### Illustrations



Dimensional drawing



Cut-out



See enlarged drawings at the end of document

### Product specification

- eight-pole M12 jack for field assembly Cat.6<sub>A</sub>
- per IEC/PAS 61076-2-109 with flange
- suitable for 10 GBit as per IEEE 802.3an
- AWG 26/7 to 22/7, AWG 24/1 to 22/1 can be connected
- solid copper wire diameter 0.4 to 0.64 mm
- stranded copper wire diameter 0.48 to 0.76 mm
- wire diameter with isolation up to 1.6 mm
- overall cable diameter from 5.0 to 9.7 mm
- jack consists of only two parts
- easy assembly without special tools
- industry-compatible zinc die-cast housing

## Data sheet

# M12 Jack X-coded IP67, field assembly with flange

## Technical Data

General Data	
Design	Jack
Mounting style	back side
Shielding	shielded
Transmission technology	Copper
Dimensions	
Dimension (L x W x H)	49.00 x 16.80 x 16.80 mm
Dimension (L x W x H)	1.93 x 0.66 x 0.66 in.
Field assembly ability	yes
Transmission characteristics	
Category (ISO)	6 <sub>A</sub>
Category (TIA)	6A
Transmission rate up to 10 GBit	IEEE 802.3an
Connections/interfaces	
Connector technology interface 1	IDC-connection
Connector technology interface 2	M12-jack
Number of ports interface 2	1
Number of ports interface 2 equipped	1
Number of positions/contacts interface 1	8
Number of positions/contacts interface 2	8
Termination data, solid wire (min. - max.)	
Leiterquerschnitt, eindrätig (Kupfer blank)	AWG 24/1 - 22/1
Conductor cross section, solid wire	0.205 - 0.324 mm <sup>2</sup>
Conductor diameter, solid wire (bare copper)	0.511 - 0.643 mm
Conductor diameter, solid wire (bare copper)	0.020 - 0.025 in.
Termination data, stranded wire (min. - max.)	
Leiterquerschnitt, mehrdrätig (Kupfer blank)	AWG 26/7 - 22/7
Conductor cross section, stranded wire	0.141 - 0.355 mm <sup>2</sup>
Conductor diameter, stranded wire (bare copper)	0.483 - 0.762 mm
Conductor diameter, stranded wire (bare copper)	0.019 - 0.030 in.

## Data sheet

# M12 Jack X-coded IP67, field assembly with flange

## Technical Data

### Connections/interfaces

Core diameter (min. - max.)	
Core diameter (conductor with insulation)	0.85 - 1.60 mm
Core diameter (conductor with insulation)	0.033 - 0.06 in.
Cable sheath diameter (min. - max.)	
Cable sheath diameter	5.00 - 9.70 mm
Cable sheath diameter	0.20 - 0.38 in.
Cable access/outlet	straight M12

### Electrical characteristics

Current carrying capacity	0.5 A
Rated voltage	48 V
Through resistance	max. 5 mOhm
Insulation resistance	min. 100 MOhm

### Mechanical characteristics

Mounting method	screwable
Insertion and withdrawal force	max.30 N
Life - Number of mating cycles	min. 100

### Materials and material properties

Material - Housing	GD-Zn (zinc die-cast)
Material - Contact	CuZn (brass)
Material - Contact finish	Ni + Au (nickel-gold)
Material - Shield	CuSn (tin bronze)
Material - Shield finish	Sn (tin)
Material - Stuffer cap	PA UL94-V0

### Environmental conditions

Temperature (min. - max.)	
Temperature - Storage °C	-25 - 85 °C
Temperature - Storage °F	185 °F
Temperature - Operating °C	-25 - 85 °C
Overvoltage category	II
Pollution degree	2

## Data sheet

# M12 Jack X-coded IP67, field assembly with flange

## Technical Data

### Environmental conditions

Electromagnetic measurement	E <sub>2</sub>
Shock	490 m/s <sup>2</sup>

### Approvals

RoHS	compliant
UL listed (file no.)	DUXR.E178484

### The product meets the following standards

Connectors for electronic equipment	
Round plug connectors	DIN EN 61076-2-109:2010-08

### Classifications

ETIM 5.0	EC001121
----------	----------

### Packing details

Type of packaging	1 pc(s) / plastic bag
Packaging unit - Weight (gram)	36.00 g
Packaging unit - Weight (pound)	0.08 lb

Data sheet

## M12 Jack X-coded IP67, field assembly with flange

### Accessories

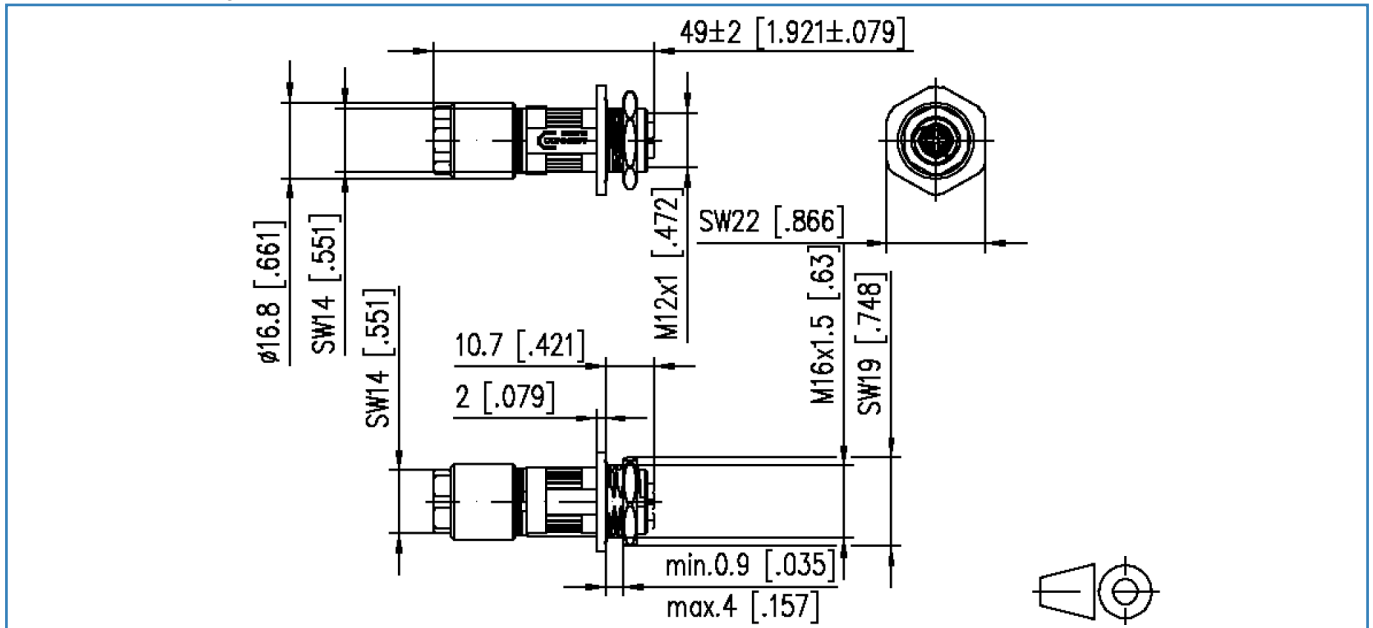
P/N	Designation
130670-E	KAPRi plus cable and installation tester
130674-E	KAPRi plus extension set M12 X-coded

## Data sheet

# M12 Jack X-coded IP67, field assembly with flange

## Illustrations

Dimensional drawing



Cut-out

